

SUEZTIMES

VOL.05



CONTENTS

Message From The Group Managing Director	01
--	----

The Heartbeat of KL Gateway	02
-----------------------------	----

An Ideal Location	03
-------------------	----

An Ideal Mall Design	04
----------------------	----

An Ideal Retail Partners	05
--------------------------	----

Iconic Central Piazza	06
-----------------------	----

Designed For Community Of The Worlds	06
--------------------------------------	----

KL Gateway Mall is set to open its door soon	07
--	----

Featured Highlights

Durian Feast	08
--------------	----

Launch of SUEZCAP Corporate Uniform	08
-------------------------------------	----

It's the "WE" time to BO-WIE!	09
-------------------------------	----

Selamat Beraya, Selamat Bersama	10
---------------------------------	----

Extending Raya celebration at site	10
------------------------------------	----

Progress Of KL Gateway	11
------------------------	----

Summary

Message from the Group Managing Director

Dear Friends and Colleagues,

Coming towards the end of year 2016, I am pleased to share that Suez Capital is going to create another milestone. The handover of Menara SUEZCAP 1 has already begun and soon followed by KL Gateway Residences 1 and 2. Ultimately, we are also looking forward to the opening of KL Gateway Mall.

Ever since we have embarked on this journey starting from 2012, we have done a lot of research and study about the market needs around KL Gateway.

Nestled in the centre of Petaling Jaya, Bangsar and Kuala Lumpur, we see the need of having an integrated development consisting of corporate office towers, residences and a shopping mall. Fronting the Federal Highway, KL Gateway indeed has a great accessibility and connectivity via New Pantai Expressway (NPE), Kerinchi Link plus a 100 meter link bridge that is built from KL Gateway to KL Gateway-Universiti LRT station to provide much convenience to the community.

Due to that, it further affirms us on a need of having a modern and urbanite shopping mall in this area to cater to the needs of the surrounding communities and an affluent neighborhood. And there you have the KL Gateway Mall.

The strategic location of KL Gateway Mall has made all things possible. Owing to its strategic location and easy accessibility and connectivity, KL Gateway Mall will be a meeting place for all. With an inspiration to create a hub for many, one's life is now so convenient. Gathering for leisure purposes and meeting for a business discussion are no longer an issue as they can shop, dine, savor, play and work, all under the roof of KL Gateway Mall. It will soon be the place that brings everyone together and starts carving priceless memories while at the same time, shaping today's neighborhood and playing an influential role in society.

Hence, I invite you to join our journey so that you are always updated with not only the progress of our company and projects but also, the happenings in KL Gateway development especially KL Gateway Mall.

Last but not least, I would like to take this opportunity to wish you a Happy New Year. May the New Year brings an abundance of joy, love and happiness to you and your family.

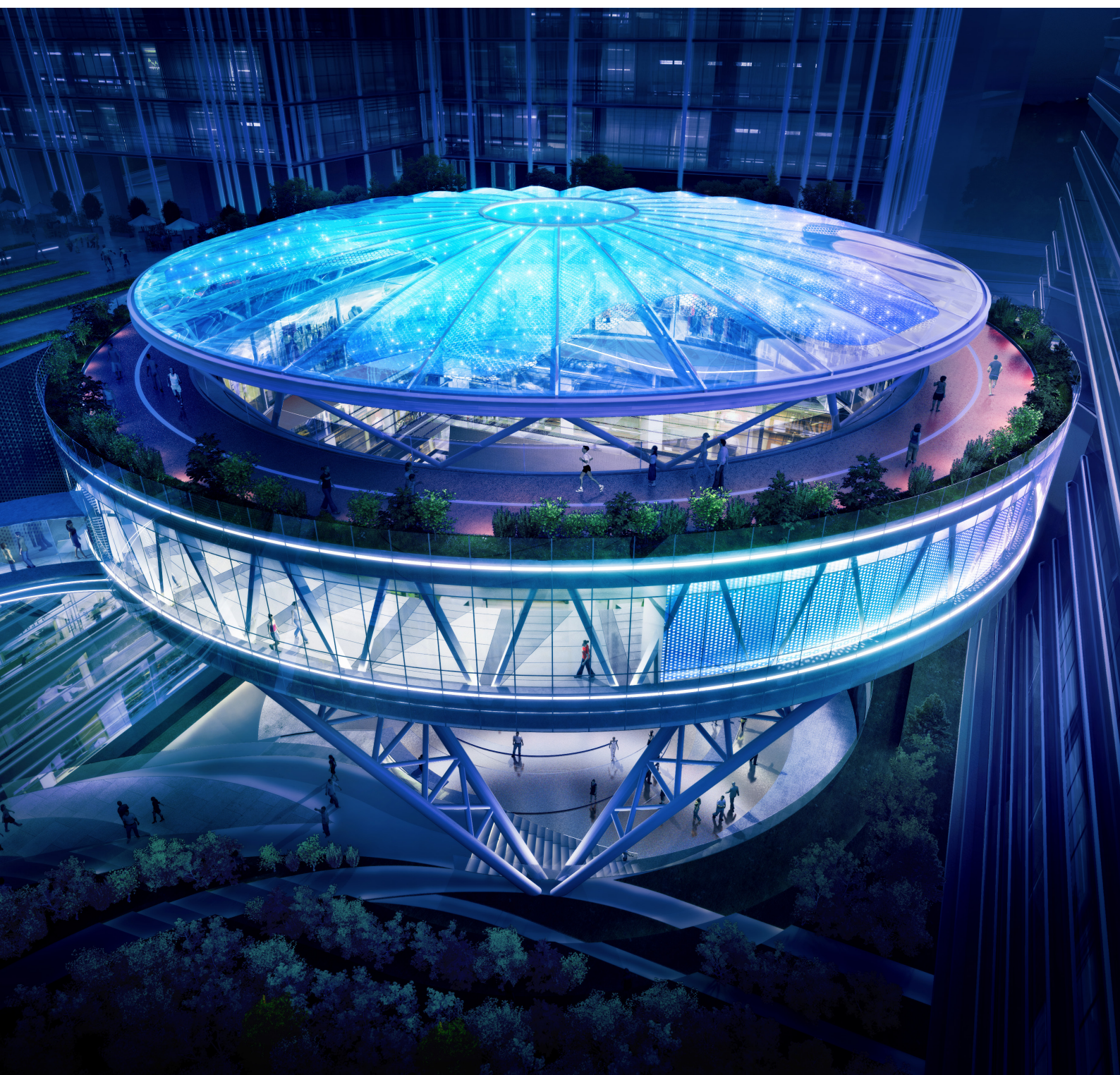
Datuk Ter Leong Hing
Group Managing Director

**KL GATEWAY
MALL**

The “Heartbeat” of KL Gateway

Emerging as part of the integrated development, KL Gateway Mall is an urban-ultra shopping destination that will excite every shopaholic and urbanite with its unprecedented design and mall layout plus the convenience and accessibility that its location has to offer.

Serving as the heartbeat of KL Gateway development, it connects the immediate communities from the corporate office towers and residences of KL Gateway together.





An Ideal Location

The winning location marks its territory as one of the best in its vicinity. KL Gateway Mall provides great accessibility to many with its major expressway such as Federal Highway, New Pantai Expressway (NPE), Sprint Highway and Kerinchi Link.

At the same time, urbanites that prefer the ease of connectivity without the hassle of driving can hop onto the Light Rail Transit (LRT) and head towards the KL Gateway – Universiti LRT station. A short walk across a 100 meter covered link bridge will bring the shoppers straight to the mall, providing great convenience to the community.

Besides that, its immediate surroundings, the affluent locals and expatriates like Mont Kiara, Bangsar South, Damansara Heights, Petaling Jaya, Taman Desa and Old Klang Road inevitably makes it a perfect meeting place to this urbanized community.





An Ideal Mall Design

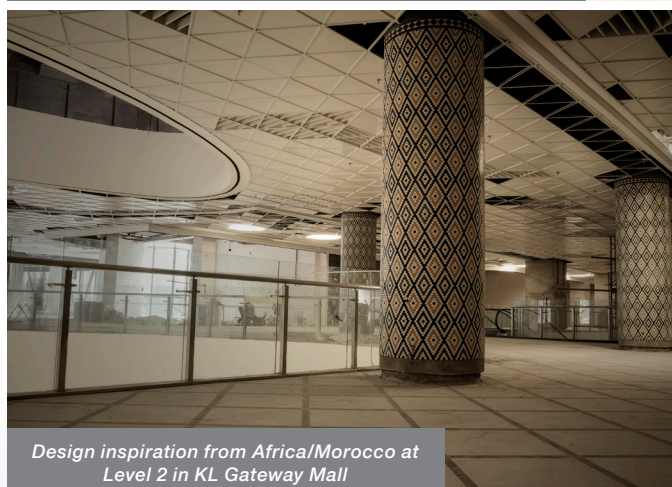
Home to a fusion culture, KL Gateway Mall infuses design elements, furnishing and finishing inspired by cultures from various parts of the world, bringing all uniqueness and fascination under its roof.

Spreading across 7 levels, KL Gateway Mall is inspired by the novel and unique street mall retail concept where orient meets occident, art meets culture and diversity meets modernity. The mall's interior design derived from exotic places and motifs from around the world which are reflected on every floor. The diversity of different cultures are prominently seen yet a seamless and modern feel is retained, levitating the spirit and mood of shopping in KL Gateway Mall.

Starting from LG1 level, the design is inspired from North America and Ground floor from Asia. When shoppers head over to Upper Ground floor, they will be amazed with the pure elegance and sophistication design where its inspiration is from Europe meanwhile, the design on the First floor gets its spur from South America. For a perfect blend of exotic and earthy culture, shopping patrons can head over to Second floor where the inspiration comes from Africa and Morocco. Heading up to the Third floor you will be rewarded by serenity and calmness, owing to the inspiration from Australia.



Design inspiration from Asia at Level UG in KL Gateway Mall



Design inspiration from Africa/Morocco at Level 2 in KL Gateway Mall

An Ideal Retail Partners

**COTTON:ON****Village
Grocer****HOME'S**
harmony
B&B**CARs**
International**MR.DIY**
Always Low Prices**BOOST**
juice bars**al-ikhshan****SAMSUNG****THE TWEET****DOUTOR**
Fresh quality coffee**DAISO**
JAPAN**GMG** TIMEWEAR**MR. CHIZU****BagSense**
factory outlet**Pet Lovers
Centre**
Pet Care Since 1979
All Passion. All Pets.**myNEWS.com****MyORTHOM**
Orthodontic and Dental Services

and many more...

With over 200 retail outlets available in KL Gateway Mall, it certainly offers shopaholic and window shoppers the ultimate retail experience that will surely keep them coming back for more.

Spanning across 500,000 sq ft, KL Gateway Mall offers a multitude of best-loved flagship brands, new-to-market retail options and most importantly, innovative concepts ranging from food, fashion, fun, leisure and entertainment, meeting the progressive demands of today's shoppers.

From brands like Mr Chizu which is set to offer freshly baked cheese cake, cheese tarts and a variety of cakes and desserts all the way to Bag Sense Factory that provides a variety of quality goods especially branded handbags and fashion accessories. These wide selection of stores are ensured that there is something for everyone, bringing diverse generations and societies together in a modern setting. Joining the likes are Aeon Wellness, Coffee World, Boat Noodle, Boost Juice, Al Ikhshan, Mr.DIY, Home's Harmony and many more exciting brands offered in store.

Besides F&B and fashion brands, KL Gateway Mall also hosts services brands such as CARs International where you can shop with a peace of mind while getting a car wash, Kumpulan Klinik Alam Medic offers medical services to people of all ages and the list continues.

Anchor tenants like Village Grocer, H&M and Cotton On are set to heighten the whole shopping experience among the shoppers.

If you are interested to join our exciting retail line-up, do call us at **03 - 6148 3801** or visit **www.klgatewaymall.com**.





Iconic Central Piazza

Lies boldly in the heart of KL Gateway Mall is the iconic central piazza that will attract both locals and tourists alike. Simply remarkable in its structure, the central piazza is the highlight of KL Gateway Mall where it will house a region for everyday's celebration.

A series of art and performances, festivals and celebration, live music and in-mall happenings will be held throughout the year to further entice the shoppers.

Ultimately, the central piazza is an oasis where all the fun is, whether it is for food hunters, arts aficionados, music lovers or friends and families to dine, gather and spend time together.

Designed For Community Of The Worlds

With the central piazza serves as the heartbeat of the mall, it is set to host many surprises and brings joy to all people. Being a hub for a variety of social gatherings, the central piazza will draw in cosmopolitan crowds-community of the world.

The activities will keep the mall vibrant and the communities bustling all the time – and that is the spirit of KL Gateway Mall.

A memorable yet cherish-able shopping experience awaits!





KL Gateway Mall is set to open its door soon



Gearing towards the opening of KL Gateway Mall, retailers and general public can stay updated with all the latest updates and happenings of the mall through these 2 channels.

Firstly, is the KL Gateway Mall website at www.klgatewaymall.com. We will feature the brands that have joined the KL Gateway Mall in stages as well as our progress in the website.

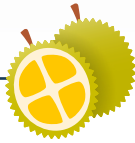
Additionally, we would also like to share with you that we have recently launched the KL Gateway Mall Facebook Page. Do "LIKE" our Facebook page at www.facebook.com/KLGATEWAYMALL and follow our KL Gateway Mall's journey starting from today.

After all, the KL Gateway Mall Facebook Page serves as a platform for better communications between the KL Gateway Mall Management Team and valued shoppers where we update you on the mall news, happenings and interesting activities.



FEATURED HIGHLIGHTS

Durian Feast



It is the time of the year again!

Durian, the King of Fruits, is one of the favorite fruit for many.

Albeit the fact that every department was occupied with piling tasks, staff was surprised by the overpowering aroma of the green and spiky fruit.

They were delighted by the freshness of the yellow flesh when the fruit is cut open. It was a "Fruit Feast Day" indeed!



Launch of SUEZCAP Corporate Uniform

"Having a corporate uniform reflects the corporate image and ignites the sense of belongings among the staff"

On the 10 October 2016, Suez Capital implemented and launched the corporate uniform across all departments.

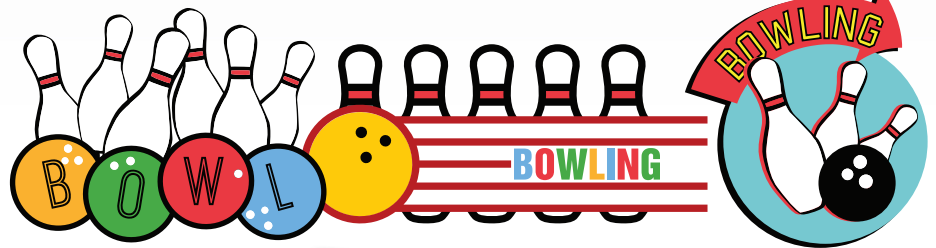
On that official launching day, staff were all geared up and looking smart, giving a very good impression not only to their colleagues but also, to our business associates as well as customers.

"It is one of our goals where staff are proud to be the family of Suez Capital and I must say that we have achieved it. Seeing all staff including the Management Team in the SUEZCAP corporate uniform pushes us to be one step ahead of other companies," shared by Datuk Ter Leong Hing.



FEATURED HIGHLIGHTS

It's the "WE" time to BO-WIE!



"Ready, get set, and BOWL!!"

You will always opt for a strike at every first throw but if you fail to get a strike, you then opt for a spare, at least. This was the spirit of sportsmanship shown by each and every staff during the bowling session at 1Utama.

All geared up in sports attire, staff were put into a team of 3 to 4 people. And the game begin. Those who did not know how to bowl were getting guidance from their teammates while those who know how to bowl were getting cheers and encouragement from their teammates.

"Seeing how much the staff enjoyed this bowling session is truly precious. Besides working together, we are now working out together," said Goh Seng Yee, Director of Corporate Communications of Suez Capital.



FEATURED HIGHLIGHTS

Selamat Beraya, Selamat Bersama



"There is strength in unity"

Celebrating a festive season would never be the same in Suez Capital especially when the company is expanding. We see new faces every month, indicating huge progress of the company.

In celebration with Hari Raya, the company hosted a Raya lunch at Latest Recipe, Le Meridien Hotel Kuala Lumpur. Staff were all dressed to the nines on that day, in conjunction with the "Colours of SUEZ" theme while some took the opportunity to dress in Malay traditional attire to spice up the overall event. Everyone had a fun and great time at the photo booth taking crazy photos with the props reflecting our "SUEZ" core values prepared by the photographer team.

"I am very pleased and happy to see a growing number of our talents. Not only that, they have shown a great team spirit and teamwork in which this value is certainly priceless. With this unity spirit that have been nurtured over the years, I believe Suez Capital will certainly soar to a greater heights in near future," said Datuk Ter Leong Hing, Group Managing Director of Suez Capital.



Extending Raya celebration at site

Adding towards the excitement during the festive season is nonetheless, celebrating it together with our site staff.

Appreciating the hard work and efforts given by the contractors, architects, consultants and the workers, Suez Capital treated them a lunch meal in conjunction with Hari Raya festive season.

Everyone gathered as one and had a meal together. This further affirms the core values of Suez Capital where UNITY comes in all form, be it the staff of Suez Capital, suppliers, contractors, architects or even, purchasers.



Progress of KL G A T E W A Y

We are pleased to announce the handover of Menara SUEZCAP 1 started taking place since November 2016 while the handover of KL Gateway Residences 1 and 2 will take place soon. Meanwhile, with the presence of KL Gateway Mall, it will add value and excitement to the surrounding communities.

While there are a lineup of activities happening in KL Gateway soon, the progress of KL Gateway Premium Residences 1 and 2 are as planned. The development is on track and will meet its handover date.



The progress of KL Gateway development



The progress of KL Gateway Premium Residences 1 and 2



The view of the KL Gateway development



The Community, Our Passion

Suez Capital Sdn Bhd is a well-established organization with diversified businesses in property development, management and investment.

Started in 1991, the company has ventured into various developments across Klang Valley in Malaysia which include the development of light industrial factories, commercial buildings and residential houses.

Suez Capital is founded by Datuk Ter Leong Hing, the current Managing Director. Together with a senior management team with over 20 years of experience in the property development industry, Datuk Ter has taken Suez Capital to greater heights of success. Driven by his mission, Suez Capital is aspired to be an innovative property developer that focuses on urban redevelopment projects and building sustainable communities.

SUEZ CAPITAL SDN. BHD.

No. 6-1, Jalan PJU 5/4, Dataran Sunway,
Kota Damansara, 47810 Petaling Jaya, Selangor

www.suezcap.com