

SUEZTIMES

VOL. 06



CONTENTS

| | |
|--|----|
| Message from the Group Managing Director | 01 |
|--|----|

Cover Story

| | |
|---|----|
| Prime Minister Malaysia officiates Residensi Kerinchi | 02 |
| KL Gateway Mall opens on 2 March 2017 | 04 |

Updates & Upcoming Development

| | |
|--|----|
| Spot the new SUEZCAP Sales Gallery | 07 |
| Services provided to Purchasers of KL Gateway | 07 |
| Open for registration | 08 |
| Staying true to our traditions in this Chinese New Year! | 09 |
| Progress of KL Gateway | 10 |

About Suez Capital

Message from the Group Managing Director

Dear Friends and Colleagues,

We now see ourselves venturing into a new year with new objectives and aspirations. Reflecting back, I am proud to say that we have come a long way since then and have changed the lives of many within the community. I would like to take this opportunity to thank you for your continuous support. This has certainly inspired us to extend the best of our services as well as delivering the products without compromising on the quality.

The first quarter of 2017 has been a great and remarkable journey. Residensi Kerinchi, formerly known as Rumah Pangsa 4 Tingkat Kampung Kerinchi, was officiated by our Prime Minister Malaysia, Dato' Sri Mohd Najib bin Tun Abdul Razak. It is the first urban redevelopment project in Malaysia and we are very proud to be the one to carve this history. With this project, we prove our passion and commitment by upgrading the standard of living of the residents.

The other highlight is, KL Gateway Mall which serves as the heartbeat for the integrated development had its soft launch on 2 March 2017. Owing to its strategic location, I believe KL Gateway Mall is the place to be especially for the surrounding community be it for their daily needs, socializing activities and gathering with their loved ones.

Certainly, things are getting more and more interesting what's more when KL Gateway Residences 1 and Menara SUEZCAP 1 had already been handed to the owners. We look forward to having you and trust you would have a pleasure stay, work and shopping experience here in KL Gateway.

Do stay tune with us for more as there are many interesting events on the pipeline and we just can't wait to reveal them in time.

Datuk Ter Leong Hing
Group Managing Director

COVER STORY

Prime Minister Malaysia officials Residensi Kerinchi



On the 27 of February 2017, this day signifies an important milestone for the residents. It is the day our Prime Minister Malaysia, Dato' Sri Mohd Najib bin Tun Abdul Razak officially launch Residensi Kerinchi.

It was definitely a joyful moment where the event began with the group visiting some of the homes and eventually launching the Residensi Kerinchi alongside the surau led by directors of Suez Capital, Datuk Yasran Hussain and Encik Abdul Hadi bin Ahmad and accompanied by the Federal Territories Minister Datuk Seri Tengku Adnan Tengku Mansor and Group Managing Director of Suez Capital, Datuk Ter Leong Hing.

Sharing the positive and inevitable excitement, the residents couldn't thank enough to the Prime Minister as well as to the developer for making their dream come true.

"The wait was worth it after all," said Encik Ahmad Rahman, the Chairman of Residensi Kerinchi Residents Association.



Formerly known as Rumah Pangsa 4 Tingkat Kampung Kerinchi which stood a four-storey flat, comprised of 472 apartment units, today, these families can now occupy a three bedroom and two bathroom unit measuring 900 sqft a unit in Residensi Kerinchi. Amidst the building, it comes with a swimming pool, surau, playground, multipurpose hall and many other facilities which provides a conducive living for all.

“It is one of a significant initiatives undertaken by Suez Capital. Along with our mission as well as core values, we strive to upgrade the standard of living of the residents. This is made possible with the support of the Ministry as well as the trust given by the residents in us. The journey is not an easy one for sure but it has definitely carved many wonderful memories along the way,” said Datuk Ter Leong Hing, Group Managing Director of Suez Capital Sdn Bhd.

Residensi Kerinchi is the first successful urban redevelopment project in Klang Valley undertaken by Suez Capital.



COVER STORY

KL Gateway Mall opens on 2 March 2017



Bolstered by a strategic location and an excellent connectivity via Kerinchi Link, New Pantai Expressway (NPE), Sprint Highway and Federal Highway, KL Gateway Mall is set to become an ideal shopping destination for the surrounding community. It is not merely just a shopping mall but it will serve as a prominent meeting point for all within Klang Valley.

Fronting the Federal Highway, KL Gateway Mall is one of the few malls in Kuala Lumpur's central business district that has a direct 100-metre link bridge to KL Gateway – Universiti LRT station.

Opening its door on 2 March 2017, KL Gateway Mall offers a wide range of retail categories from fashion, dining,

edutainment, home, office and many more, that spreads over seven retail floors.

Brands that are making their debut in Malaysia at KL Gateway Mall are The TWEE, He's Dawan and Tovista. The TWEE is a Korean fashion brand that opens its first flagship store in Malaysia while He's Dawan and Tovista are local brands in food and beverage.

Other names that can be seen at KL Gateway Mall are Village Grocer, H&M, Fenix Restaurant, Al-Ikhsan, Cotton On, Times Bookstore, Mr D.I.Y, Reka Zone Playland, La Cucur, Daiso, espressoLab, Biogreen, Yummi House, GMG Timewear and many more.





In addition, shoppers now have a myriad of other choices to select from. If you are looking for a pair of a fashionable sunglasses, then Eyeworks Optometry and Eye : Dentity offer a stretch of variety for your selection. As for the gadget lovers, you can get the latest phone models and accessories from Samsung, Cazemate and Easytec Gadget.

For ladies, if you are looking to pamper yourself, you can now visit The Nail Shop, Posh Belle, Style Design and many others for body massage, manicure, pedicure and etc.

The mall design is also one of the reasons that is set to attract the eyes of many with its unique theme on each floor.

Maggie Cheah, a working professional in Bangsar South complimented on the mall interior design and said "The interior design of this mall is very unique. When I first step into the mall, my eyes are greeted to the brick pillars in LG1, giving a subway feel; and when I go to the Ground floor, I am amazed with the marvelous marble pillars."



and many more...





**KL GATEWAY
MALL**

From the design elements and motives plus its strategic location, KL Gateway Mall offers a diverse of experience to shoppers as well as proving to be an excellent venue to host many different events like the recent Stylo event organized by Stylo International and Mercedes Benz. Joining the likes are food fest, women entrepreneur workshop and etc.

KL Gateway Mall is part of the integrated development, KL Gateway, under Suez Domain Sdn Bhd, a subsidiary of Suez Capital Sdn Bhd. Besides serving its surrounding community, the mall also serve the immediate KL Gateway community comprising four towers of residential units and two Grade-A corporate office towers which will be delivered in stages.



UPDATES

Spot the new SUEZCAP Sales Gallery

We are pleased to inform you that SUEZCAP sales gallery is now relocated to KL Gateway Mall. You may find us at the below address and details:

**LG1.05, KL Gateway Mall,
No.2, Jalan Kerinchi,
Gerbang Kerinchi Lestari,
59200 Kuala Lumpur.**

Tel No: 03 – 7941 1188

Fax No: 03 – 6141 7279

Tol Free No: 1800 888 280

Come visit and check it out now!



UPDATES

Services provided to Purchasers of KL Gateway



We are here to assist you!

The handover of units in KL Gateway Residences 1 and Menara SUEZCAP 1 is completed.

Some have begun with the renovation works while some have even moved in to stay. For owners of Residences 1 and Menara SUEZCAP 1, you can now apply for TM and UNIFI services.

For any assistance, please call the respective parties with the below details:

Customer Care office : 03 - 7452 8117

Property Leasing office : 03 - 7452 8117

Residences 1 Management office : 017 - 905 0303

Menara SUEZCAP 1 Management office : 017 - 905 0303



KL GATEWAY — SUITES —

UPCOMING DEVELOPMENT

Open for registration

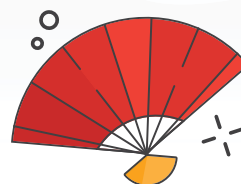
It's not just what and who you know, but where you choose as your launching point. KL Gateway Suites is connected to KL Gateway. Living at KL Gateway Suites and being part of the KL Gateway family, you are positioned at the intersection of KL Gateway Mall, luxury residences and grade A offices. KL Gateway Suites fronts the Federal Highway with easy access to the New Pantai Expressway and SPRINT highways, and the KL Gateway-Universiti LRT Station via a 100m covered link bridge.

Register your interest at www.klgateway.com.my or call **03 - 7941 1188** for special preview.



UPDATES

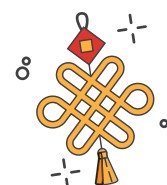
Staying true to our traditions in this Chinese New Year!



It is that time of the year again where we come together for the festive spirit!

Dressed in corporate uniform, Suez Capital's staffs were all present to celebrate Chinese New Year for a buffet luncheon at Cinnamon restaurant in One World Hotel. Staffs were all smiles and filling their tummies over a fanfare of festive delights.

"Chinese New Year is the time where all of us come together to celebrate this meaningful occasion by taking a break from their busy schedule. As the company is growing exponentially, the festive season has then made it so important for all of us as this gathering becomes an important avenue to instill the importance of unity among the staff in which it can only be achieved if they know one another better", said Datuk Ter Leong Hing, Group Managing Director of Suez Capital.



Progress of KL GATEWAY

We are pleased to announce that the KL Gateway Mall is now open including the 100-metre link bridge connecting the KL Gateway – Universiti LRT station and the mall.

Menara SUEZCAP 1 and KL Gateway Residences 1 have just been handed over while the handover for KL Gateway Residences 2 will be conducted soon. Meanwhile, Menara SUEZCAP 2 is progressing in a timely manner.

As for KL Gateway Premium Residences 1 and 2, the construction works is in progress as scheduled.





Suez Capital Sdn Bhd is an established organization with diversified businesses in property development, management and investment. Since its inception in 1991, the company has ventured into various developments across Klang Valley in Malaysia which include the development of light industrial factories, commercial buildings and residential houses.

With a senior management team that has more than 20 years of experience in the property development industry, Suez Capital aspires to be an innovative property developer that focuses on urban redevelopment projects and building sustainable communities.

Its latest award-winning project, KL Gateway, is an integrated development strategically located along the Federal Highway which also comprise corporate office towers, premium residence towers and a retail mall.

SUEZ CAPITAL SDN. BHD.

No. 6-1, Jalan PJU 5/4, Dataran Sunway,
Kota Damansara, 47810 Petaling Jaya, Selangor

www.suezcap.com